

# Myths, Truths, & Snark Surrounding Head Necklaces

By Trystan L. Bass

Costume College 2018

[trystancraft.com/costume](http://trystancraft.com/costume)

First, a word from our sponsors...

<https://frockflicks.com/snark-week-head-necklaces/>

# What is a head necklace?

- Not a headband that goes on top of the head, ear to ear
- Not a tiara or other jeweled headpiece that sits on top of the head
- Not just jewels set into a hairstyle
- Not a hat

It looks like a necklace plopped on top of the head,  
usually with a center jewel dangling down!

# NOT Historically Accurate

- Movies & TV shows usually get it wrong!



# Medieval

Helen Mirren  
in Excalibur  
(1981)



Lesley Anne Down in The Hunchback of Notre Dame (1982)





Merlin (2008-2012)



# LABYRINTH

Kate Mosse's Labyrinth (2012)

The White Princess (2017)





Genevieve Bujold in *Anne of the Thousand Days* (1969)

Renaissance



Elizabeth Taylor in  
*The Taming of the  
Shrew* (1967)



Queen Margot (1994)



Tamzin Merchant in The Tudors  
(2007-2010)



Isolda Dychauk in *Borgias: Faith & Fear* (2011-2014)





Lara Pulver in Da Vinci's  
Demons (2013-2015)



Reign (2013-2017)



*Fashion of Reign*

Caitlin Stasey in Reign (2013-2017)



Jeanette MacDonald in *New Moon* (1940)



Nina Foch in *Scaramouche* (1952)



Jean Hagen in *Singin' in the Rain* (1952)

18<sup>th</sup> Century



19<sup>th</sup> Century



War & Peace (2016)

1920s



Essie Davis in  
Miss Fisher's  
Murder Mysteries  
(2012-2015)





Essie Davis in  
Miss Fisher's  
Murder Mysteries  
(2012-2015)



Downton Abbey (2016)

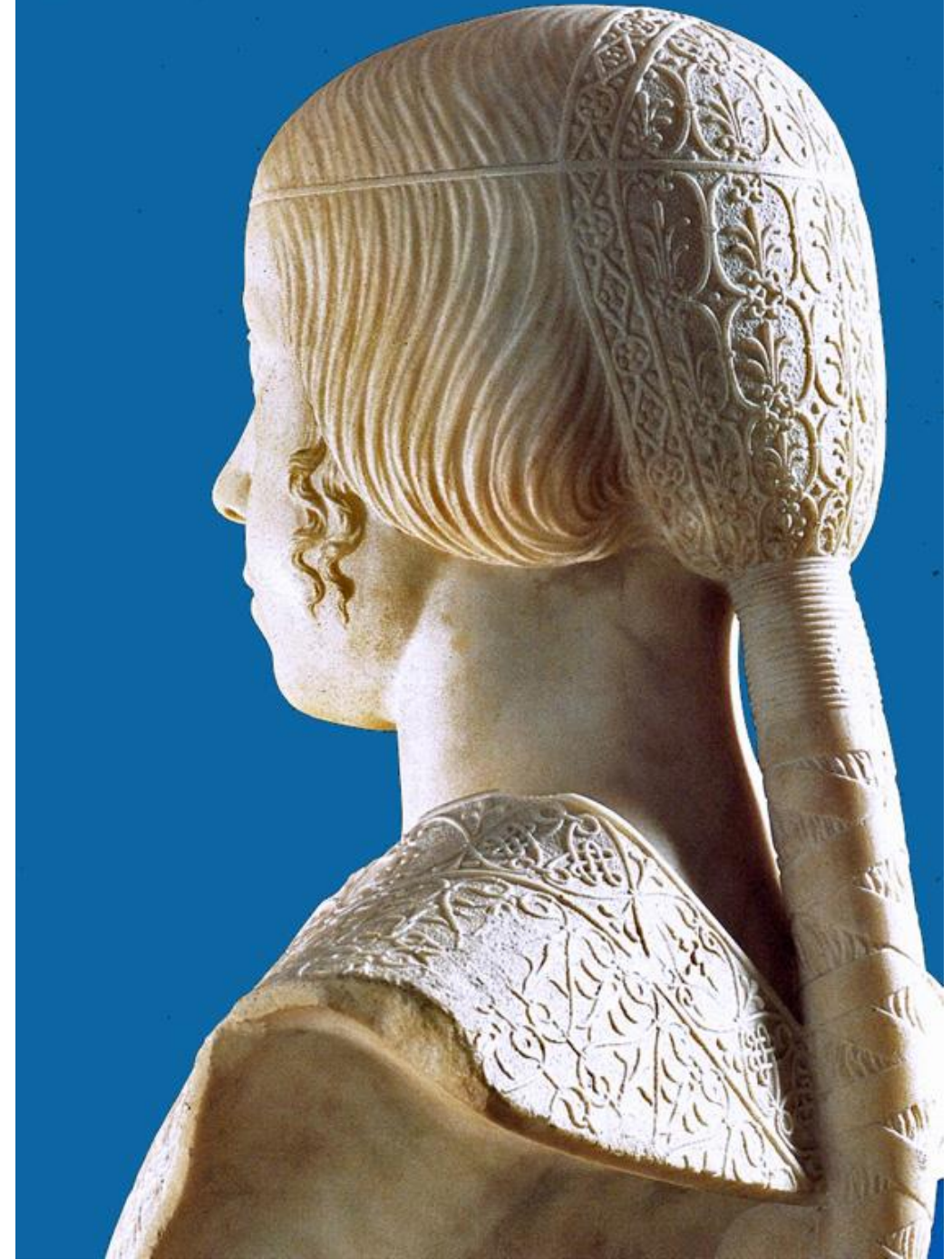
# Historically Accurate Head Necklaces, Part I

- Renaissance Italy!
- Evolved into hair jewels,  
late 16<sup>th</sup> century

1495  
Bianca Maria  
Sforza  
by Ambrogio  
de Predis



1470s-  
1530s,  
Italian  
City-  
States



1475-1497  
Beatrice d'Este  
by Gian Cristoforo  
Roman

1485-1500  
by Ambrogio  
de Predis



1490s  
Barbara  
Pallavicino  
by  
Alessandro  
Araldi



1493  
Bianca  
Maria  
Sforza  
by  
Ambrogio  
de Predis





1490s  
by Giovanni  
Antonio  
Boltraffio



1500-1510  
by  
Bartolomeo  
Veneto



1495-1499  
La Belle  
Ferronniere  
by Leonardo  
da Vinci



1490  
Lady with an  
Ermine  
by Leonardo  
da Vinci

1500  
Lady as St.  
Lucy  
by Giovanni  
Antonio  
Boltraffio



1500  
by Giovanni  
Antonio  
Boltraffio



1500  
by  
Bernardino  
Zaganelli



1500  
Lady with  
lapdog  
by Lorenzo  
Costa





1503-1505  
Elisabetta  
Gonzaga  
by Raphael



1508  
by Girolamo  
Di Benvenuto

1520  
Idealized  
Lady as  
Flora by  
Bartolomeo  
Veneto



1520s  
Italian  
Woman  
by German  
painter



# Later 16<sup>th</sup> Century

1536  
Archduchess  
Eleanor of  
Austria  
by Jakob  
Seisenecker



1575  
Laura Dianti  
by the  
Italian School

KVNIGIN · LEONORA · IST · GEBORN · DEN · ANDE ·  
RN · TAG · NOVEMBRI · IM · M · D · XXX · IIII · IAR





1579-1587  
Clementia of  
Habsburg  
by Anton  
Boys



1579-1587  
Elisabeth  
of Austria  
by Anton  
Boys



1560s  
by Jacopo  
Zucchi





1600-1610  
Marie de  
Medici



1590s  
Blanche  
Parry  
by Marcus  
Gheeraerts  
the Younger

# Historically Accurate Head Necklaces, Part II

- Early 19<sup>th</sup> Century
- Themes:
  - Neoclassical (Empress Josephine, pearls)
  - Romanticism, Renaissance revival
  - Very popular in Germany, Eastern Europe
  - Mostly worn as evening wear
  - But sometimes worn as daywear too!

1813  
Comtesse  
Legrand  
by Antoine-  
Jean Gros



# Neoclassical & Pearls

1803

Empress  
Josephine  
by  
Pierre-Paul  
Prud'hon



1804-1809

Empress  
Josephine  
by Louis-  
Francois  
Aubry





1807-1835  
Catherine of  
Wurttemberg  
by Counis  
Solomon-  
William



1810  
Empress  
Josephine  
by Jean  
Baptiste  
Isabey

1808-1815  
Caroline  
Murat  
by Francois  
Gerard



1808  
Eglee  
Auguie Ney,  
Duchese  
d'Elchinge,  
1<sup>st</sup> Princess  
de la  
Moskowa  
by Baron  
Francois  
Pascal  
Simon  
Gerard



1807 Princess  
Augusta  
Amelia of  
Bavaria,  
Duchess of  
Leuchtenberg  
by Andrea  
Appiani



1810s  
Princess  
Augusta  
Amelia of  
Bavaria,  
Duchess of  
Leuchtenberg





1829  
Maria  
Cornelia  
Gravin van  
Wassenaer  
by Jean-  
Baptiste van  
der Hulst



1830  
Caroline  
Franziska  
Tridon



1827  
Marie  
Daffinger  
by Moritz  
Michael  
Daffinger



1830  
Countess  
Elisaweta  
Woronzowa  
by Josef  
Eduard  
Teltscher

1835-1837  
Countess  
Elisaveta  
Ksaverевна  
Vorontsova  
by Moritz  
Michael  
Daffinger



1840  
Princess  
Wilhelmine  
Luise von  
Anhalt-  
Bernburg  
by Friedrich  
Wilhelm  
Schadow



1830-1840  
by Ary  
Scheffer



1834  
by Ferdinand  
Hauptner

1836  
Charlotte von  
Rothschild  
by Moritz  
Daniel  
Oppenheim



1837  
Amelie of  
Leuchtenberg  
by Friedrich  
Durck



1833  
Queen Maria  
Anna of  
Saxony



1840  
Brazilian  
Empress Dona  
Amelie of  
Leuchtenberg  
by Friedrich  
Durck



1842  
Angelica Singleton  
Van Buren  
by Henry Inman



# Renaissance Revival

1828  
Charlotte von  
Hagn  
by Joseph Karl  
Stieler



1830s  
Artist's Sister  
as La Belle  
Ferroniere  
by Alexandre-  
Marie Colin





1833  
Clara Novello  
by Edward  
Petre Novello



1833  
Marquise de  
Bethisy  
by Carl von  
Steuben



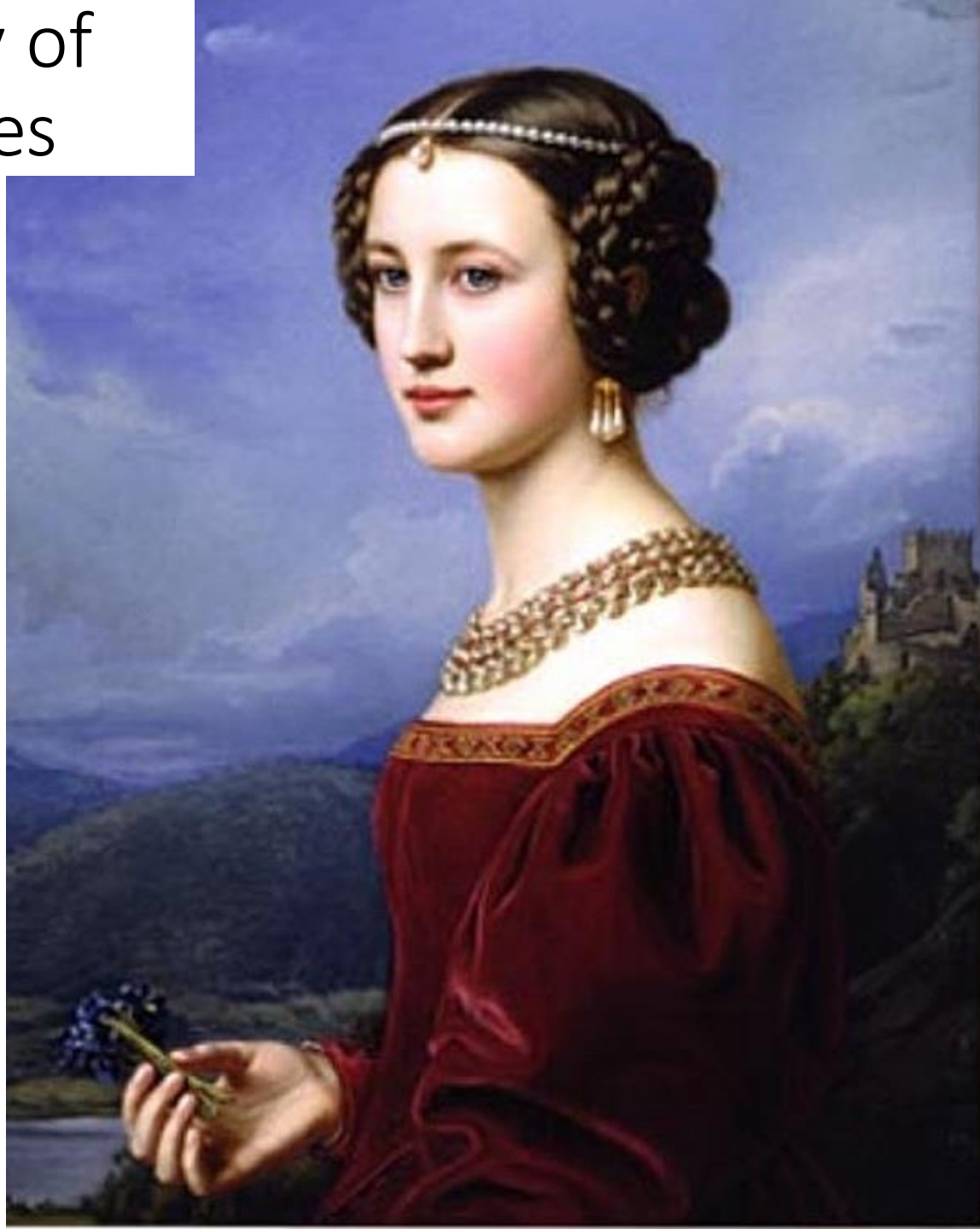
1840  
Alexandra  
Feodorovna  
Schubert  
by Alexander  
Brullov



1840s  
Princess Maria  
Fyodorovna  
Baryatinskaya  
by Christina  
Robertson

# Gallery of Beauties

1828  
Cornelia  
Vetterlein  
by Joseph  
Karl Stieler



1831  
Amalie von  
Schintling  
by Joseph  
Karl Stieler



1831

Lady Jane  
Elizabeth  
Digby  
by Joseph  
Karl Stieler



1831

Marchesa  
Marianna  
Florenzi  
by Joseph  
Karl Stieler



1834  
Irene Graefin  
von Arco  
Steppberg  
by Joseph  
Karl Stieler



1837  
Lady Jane  
Erskine  
by Joseph  
Karl Stieler



# Evening



1825  
by Louis  
Francois  
Aubry



1830s  
New  
Orleans  
free  
woman  
of color  
by Julien  
Hudson

1830  
Costumes  
Parisiens



*Coffure en cheveux figurant un casque. Robe de tulle à remplis et entredoux brodés.  
Double schall de gros de Naples brodé.*



FULL DRESS.

CONCERT DRESS.

FRENCH COSTUME FOR FEBRUARY. 1830.

1830  
Lady's  
Magazine,  
Museum of  
the Belles  
Lettres, Full  
Concert  
Dress

1830  
Evdokia  
Bakunina  
by Petr  
Feodorovich  
Sokolov



1830  
Sophia  
Urusova  
by Alexander  
Brullov



1830s  
Princess  
Maria  
Liechtenstein  
by Friedrich  
Von Amerling



1830  
Olga  
Stanislavovna  
Pototskaya

1832  
by Carl  
von Saar



1831  
by Miklos  
Barabas



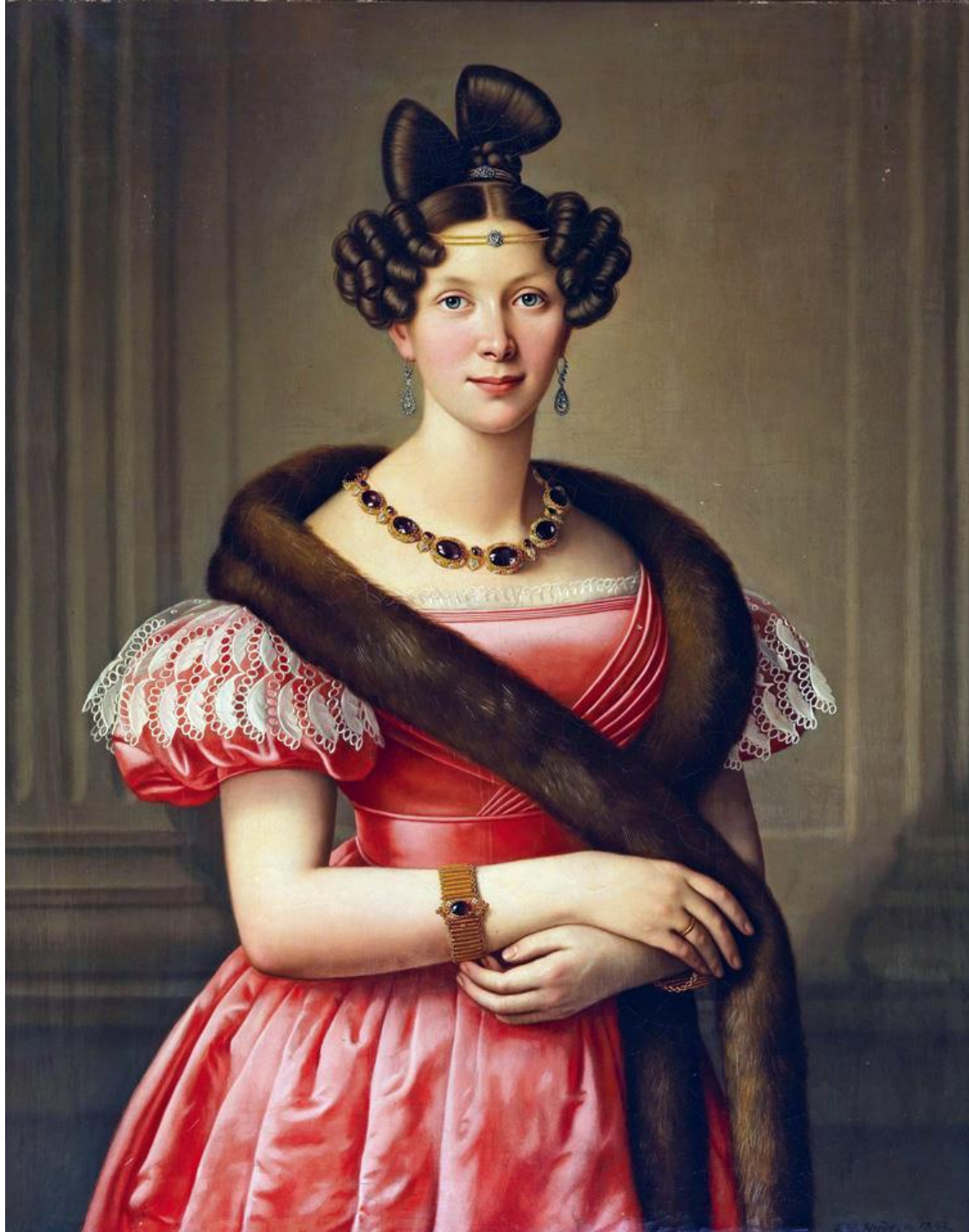
1831-1833  
SA Schubert  
Ur Baroness  
Ral  
by Alexander  
Brullov



1831-1832  
Natalia  
Nikolaevna  
Pushkina  
Lanskaya  
by Alexander  
Brullov



1833  
Lady of  
Rohde family  
of Berlin  
merchants  
by Friedrich  
Wilhelm  
Herdt



1830s  
Ludwika  
Potockanee  
Walewska  
by Stanislaw  
Marszalkiewicz



1834  
Modes de  
Paris Petit  
Courrier des  
Dames



1834  
Maria  
Malibran

*Petit Courrier des Dames.*



1835  
Albertine  
Mendelssohn  
Bartholdy as Bride  
by August Theodor  
Kaselowsky



1835  
Duchess  
Tatiana  
Vasilievna  
Golitsyn  
by Francois  
Nicholas Riss



1835  
Duchess  
of Kent  
by Sir  
George  
Hayter





1835  
Ladies Cabinet  
Evening Dress

EVENING DRESS.



1835  
Ladies Cabinet  
Social Party  
Dress

SOCIAL PARTY DRESS.



EVENING DRESS.

Jos<sup>ph</sup> Robins

1835  
Ladies Pocket  
Magazine  
Evening  
Dress



*Le Follet Courrier des Salons*

1835  
Le Follet  
Courrier des  
Salons Lady's  
Magazine



1836  
Modes de  
Paris

Modes de Paris.  
*Petit Courrier des Dames.*

1836  
by Joseph  
Bernhardt



1837  
Isabella  
Sangushko



1838  
Freifrau von  
Bernus  
by Philipp  
Velt



1838  
Miss White  
by Joseph  
Desire-Court





1837  
Mathilde,  
Countess of  
Lynar  
by Eduard  
Magnus



1837  
Princess  
Marianne of  
Prussia  
by Theodor  
Hildebrandt





1837  
Queen  
Victoria



1840  
Queen  
Victoria  
by Partridge

1839  
Countess  
of Wilton  
of Wilton  
Castle



1840s  
N.P. Panina  
by Pimen  
Nikitich  
Orlov



# Daytime

1828  
German  
Princess  
by Francois  
Joseph  
Kinsoen



1828  
Marie  
Daffinger  
by Moritz  
Michael  
Daffinger



1829  
Anna Jacoba  
Gerken  
by Jan Adam  
Kruseman



1835  
Agrafena  
Sergeevna  
Romanova  
by Vladimir Hau



1830  
Princess  
Louise  
Trofimovna  
Golitsyn  
by Pyotr  
Fyodorovich  
Sokolov



1830s  
Sh.B.  
Meshcherskaya  
by Alexander  
Brullov



1831  
Maria  
Malibran  
by Francois  
Bouchot



1830s-1840s  
Princess  
Leonilla  
Ivanovna  
Wittgenstein ur.  
Baryatinskaya  
By Pyotr  
Fyodorovich  
Sokolov



1832  
Sophia  
Radzivil  
by Pyotr  
Fedorovich  
Sokolov



1835  
Kaiserin  
Maria Anna  
von  
Osterreich  
by Circle of  
Moritz  
Michael  
Daffinger



1831  
Zinaida  
Volkonskaya  
by Amelie  
Munier-  
Romilly



1833-1835  
Princess E.P.  
Saltykova  
by Karl  
Brullov





1838  
by V.A.  
Tropinin

1840s  
Marie-  
Elisabeth  
Boulanger



1840s  
by Pimen  
Nikitich  
Orlov



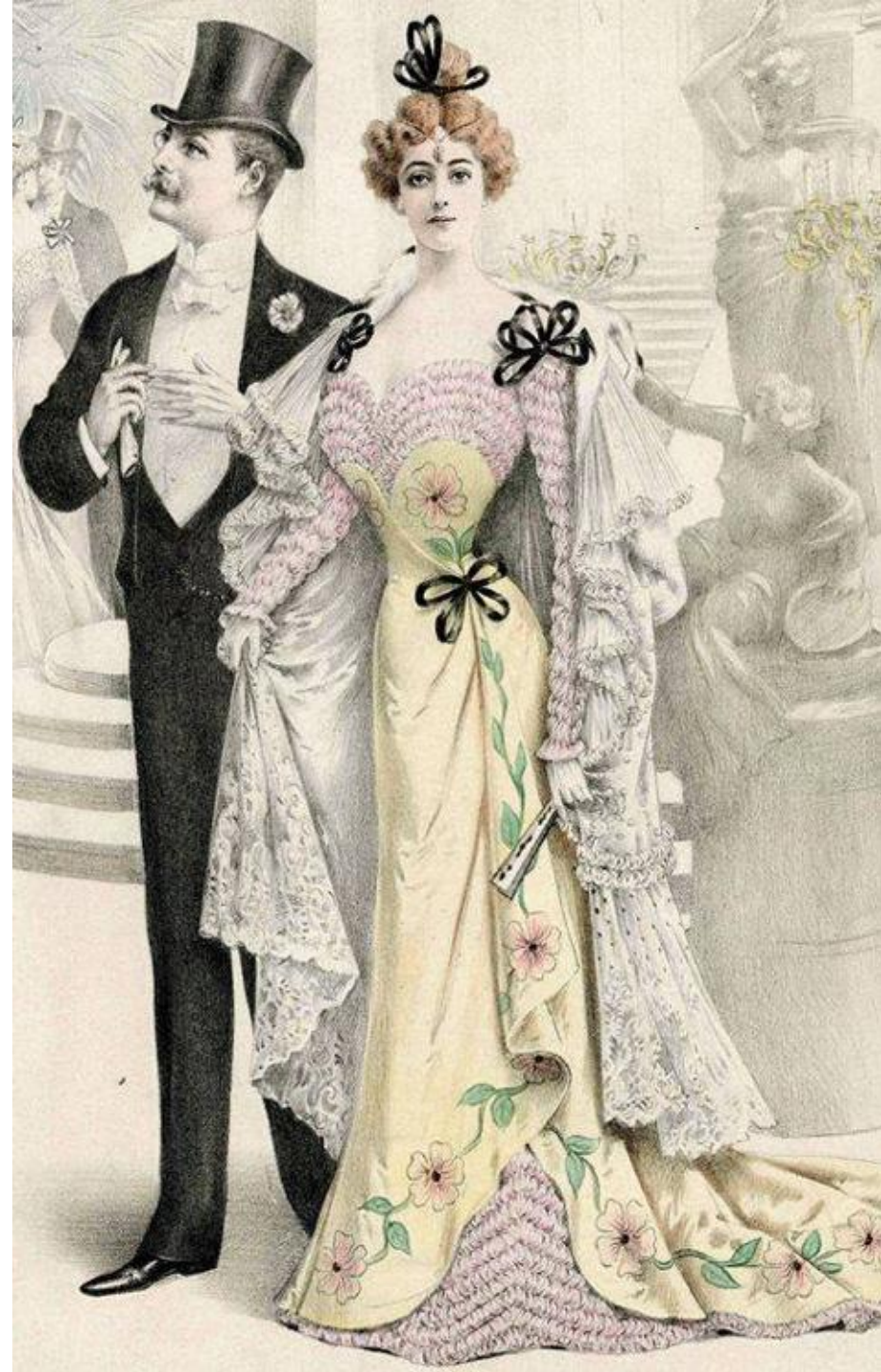
# Historically Accurate Head Necklaces, Part III

- Late 19<sup>th</sup>-century, early 20<sup>th</sup> century





1896  
Mme. Jenő  
Hubay De  
Szalatnya  
by Philip de  
Laszlo



1900s  
Fashion  
Plate

1919  
Gloria Swanson  
"Don't  
Change Your  
Husband"



1920s  
Pola Negri





1920  
Cartier  
diamond  
bandeau



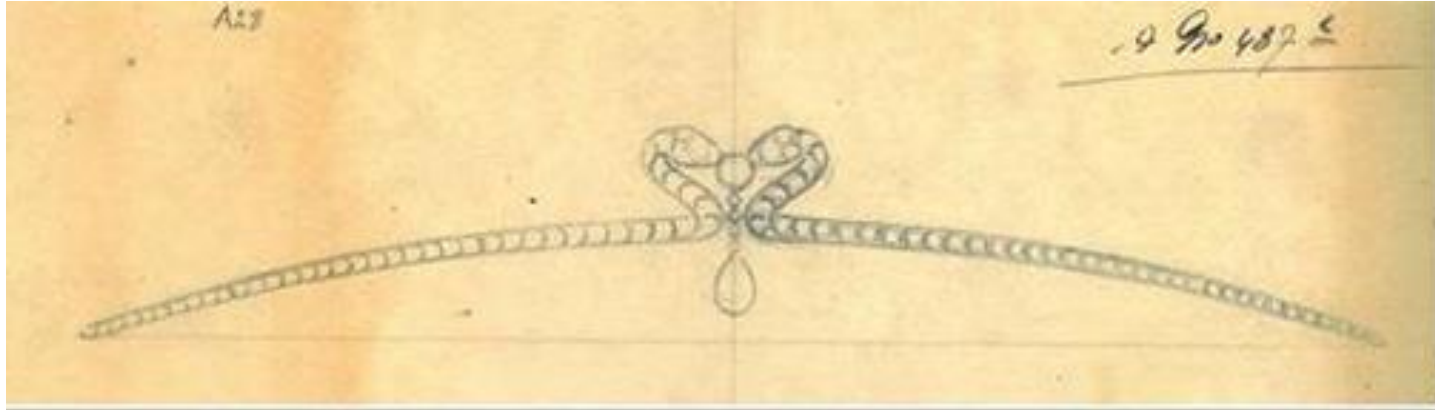
1920s  
Cartier  
headband



1920  
Victoria  
Eugenia of  
Battenberg,  
Queen of  
Spain



1920s  
Princess  
Isabel of  
Romania,  
Queen of  
Greece



1921  
Snake Ferronniere  
by Mellerio

# THE SATURDAY EVENING POST

For

Franklin

FEB. 4, 1922

5c. THE COPY

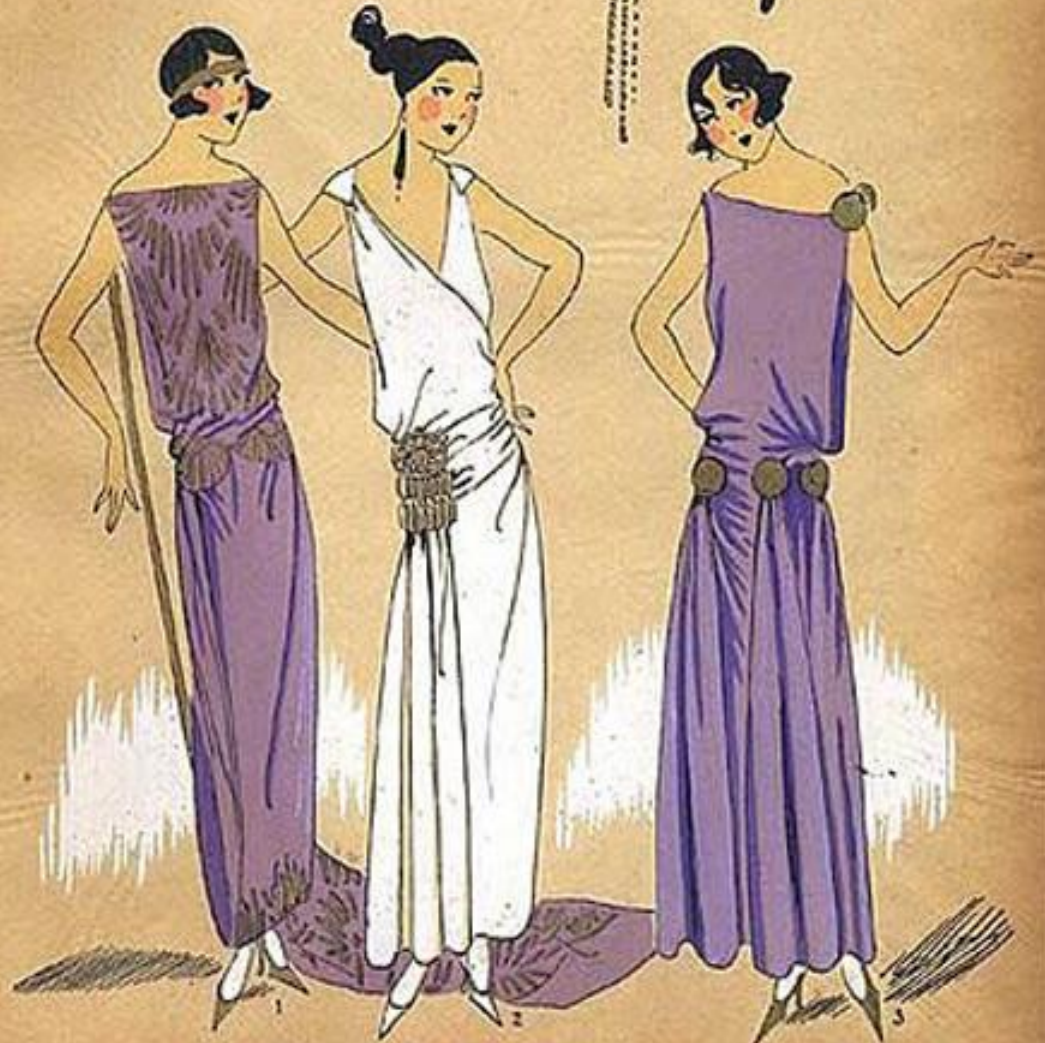


Beginning  
**Merton of the Movies**—By Harry Leon Wilson

1922  
Saturday  
Evening  
Post  
"Flapper"  
by Ellen  
B.T. Pyle

*Les idées nouvelles*

*idées de  
Jean Patou*



*Robe de soir en crêpe de Chine drapé  
et brodé d'arabesques et de coquelicots.*

*Robe de soir en soie velours,  
gousses et motif de béatitudes.*

*Robe en crêpe satin avec cocardes  
de rebrousse en motifs.*

1923  
Jean Patou  
Les Idées  
Nouvelles de  
la Mode,  
Fashion-Art  
Deco Pochoir  
Tres Parisien



*Victoria, close, but you can do better!*